

# **proadvise GmbH**

## **The synami partner for Schedule Reader**

---

What's New in 9.9 release for ScheduleReader?



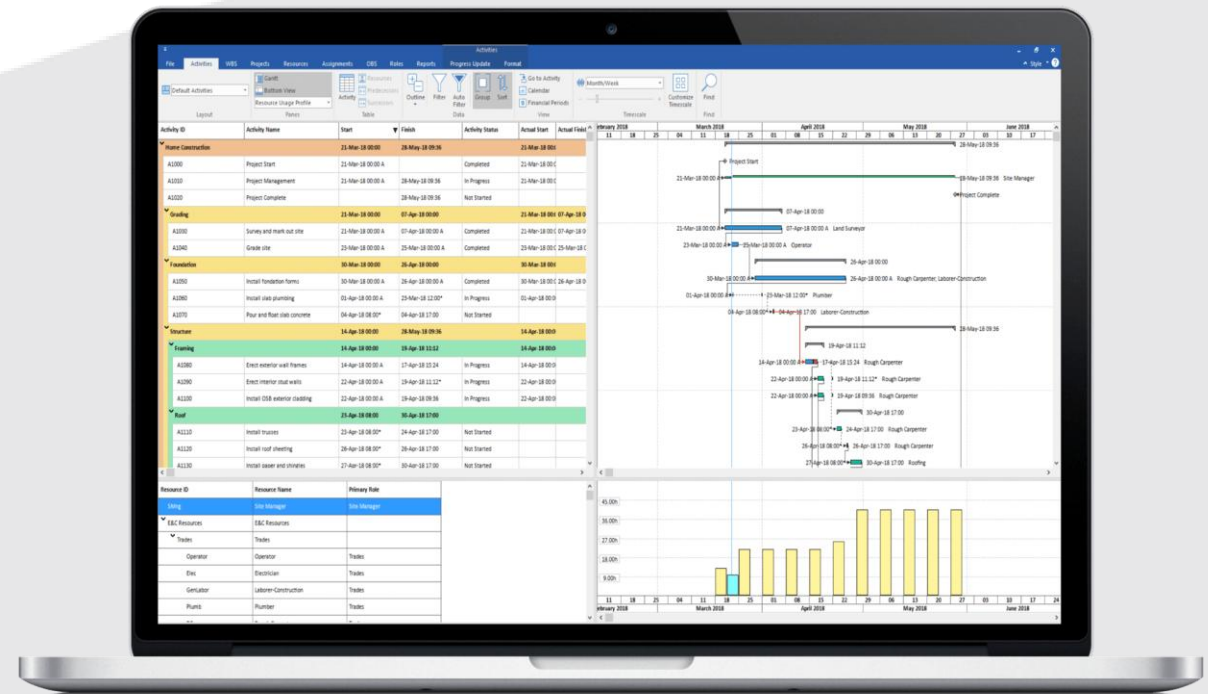


# ScheduleReader™

Reader for .XER and .XLM schedules  
exported from Oracle® Primavera P6

## What's New in 9.9 release

- Risk module
- Coloring WBS bands
- Timescale Font & Color formatting
- "Title" and "Name/Description" in Grouping
- Different label positions in Gantt Chart
- Present the project on "Data" and "Current" date
- "Date" fields in Custom Filter





# About

## I Mission

Offer a simple and cost effective tools that **maximizes productivity** and **modernizes work** when sharing schedules.

## Our Values

---

### Simple

Easy to Use

### Smart

All-in-One tool

### Trusted

Reliable Partner



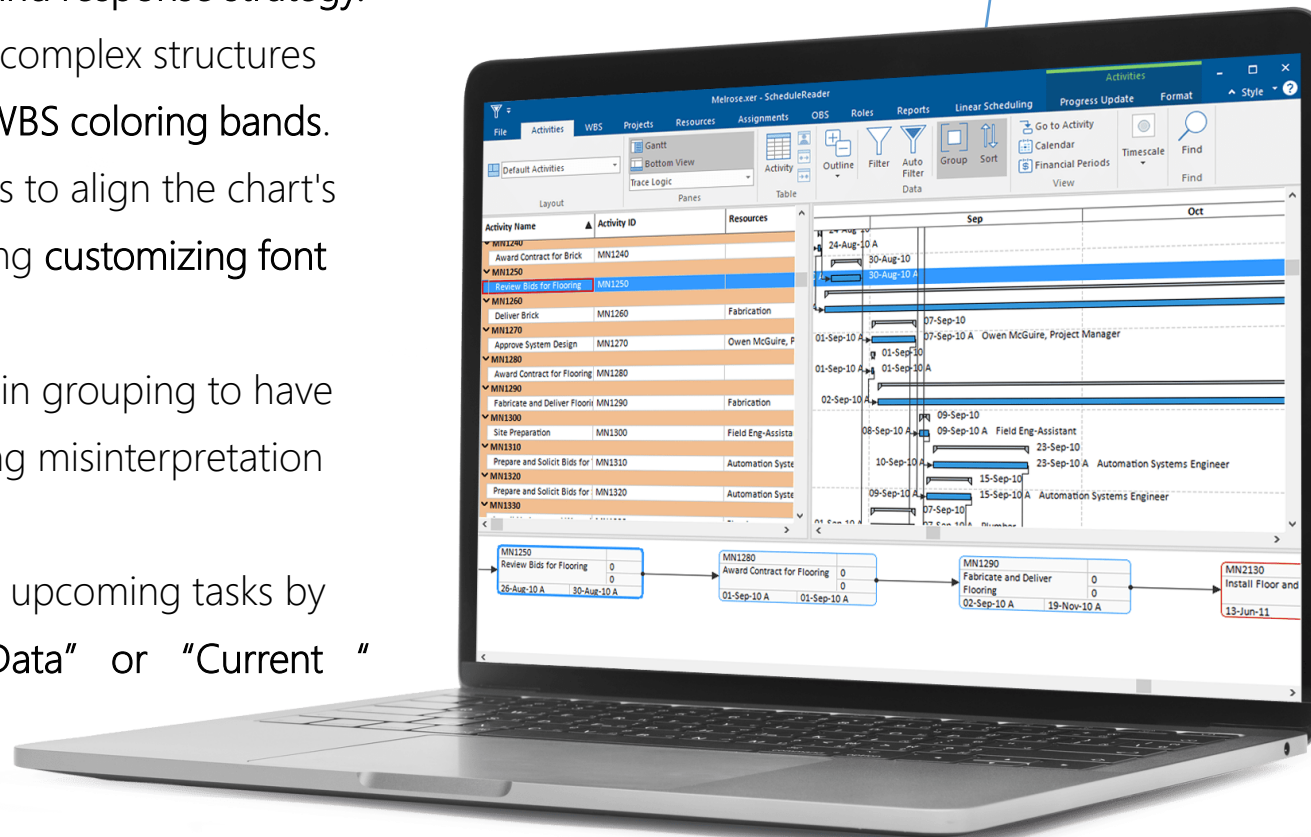
# More flexibility while working

What's new in RWE Client release



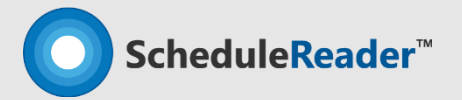
## Key Benefits of ScheduleReader RWE release

- View detailed information about risks assigned to the project, including risk name, impact, probability, and response strategy.
- Visually separate project phases, making complex structures easier to interpret at a glance using the WBS coloring bands.
- Improve the visual clarity and allows users to align the chart's appearance with reporting standards using customizing font and color in the timescale.
- Including "Title" and "Name/Description" in grouping to have clearer context for grouped data, reducing misinterpretation and saving time during reviews.
- Focus attention on relevant progress and upcoming tasks by displaying the project from either the "Data" or "Current" date.





View assigned risks and opportunities in the project plan

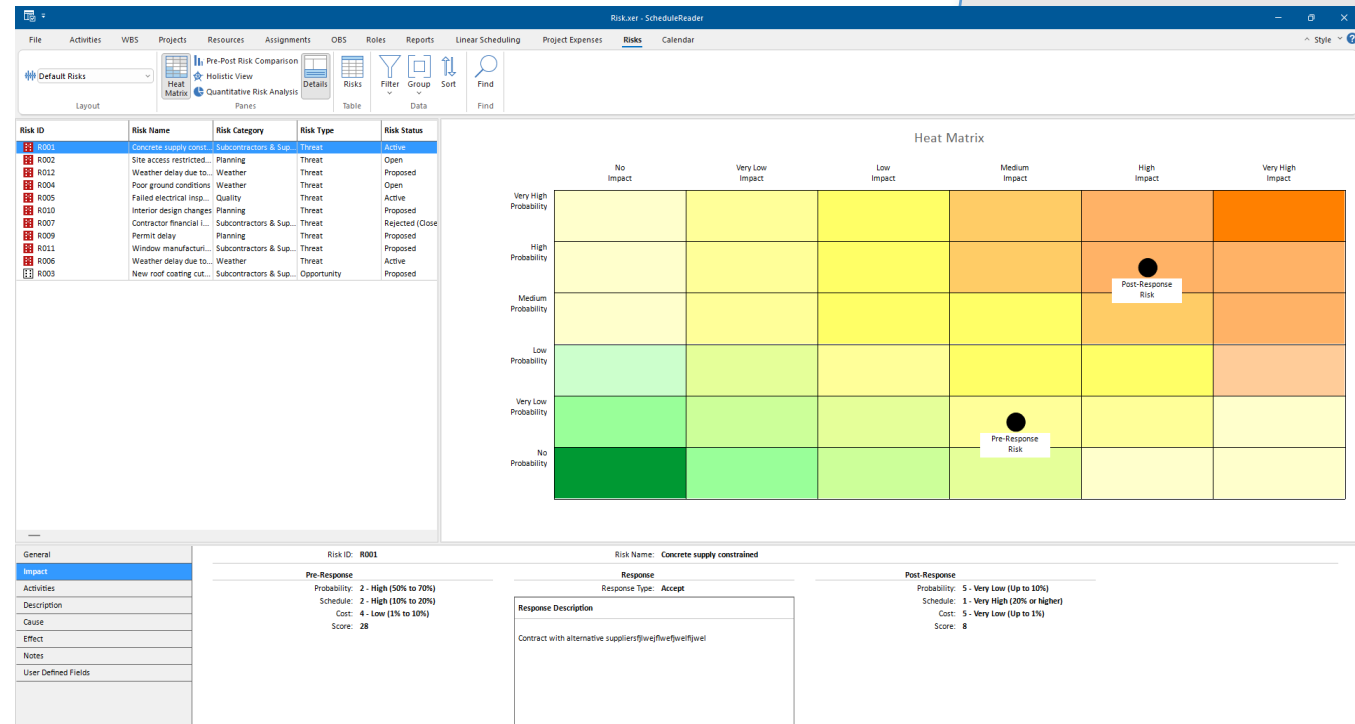


## Risks

Allows users to view detailed information about risks assigned to the project, as exported from Primavera P6, including risk name, impact, probability, and response strategy.

## Benefits

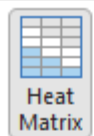
This module enables team members to stay informed and aligned on project risks relevant to their responsibilities, improving risk awareness and response coordination.







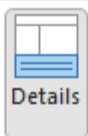
Default Risks



Pre-Post Risk Comparison

Holistic View

Quantitative Risk Analysis



Risks



Filter



Group



Sort



Find

Find

Layout

Panels

Table

Data

Risk ID	Risk Name	Risk Category	Risk Type	Risk Status
R001	Concrete supply const...	Subcontractors & Sup...	Threat	Active
R002	Site access restricted...	Planning	Threat	Open
R012	Weather delay due to...	Weather	Threat	Proposed
R004	Poor ground conditions	Weather	Threat	Open
R005	Failed electrical insp...	Quality	Threat	Active
R010	Interior design changes	Planning	Threat	Proposed
R007	Contractor financial i...	Subcontractors & Sup...	Threat	Rejected (Close
R009	Permit delay	Planning	Threat	Proposed
R011	Window manufacturi...	Subcontractors & Sup...	Threat	Proposed
R006	Weather delay due to...	Weather	Threat	Active
R003	New roof coating cut...	Subcontractors & Sup...	Opportunity	Proposed

	No Impact	Very Low Impact	Low Impact
Very High Probability			
High Probability			
Medium Probability			
Low Probability			
Very Low Probability			
No Probability			



# Coloring WBS bands

Format grouping bans in the project plan

## WBS bands Coloring

Customizing the look of the WBS bands by changing the text properties (font, font size, etc.) and the grouping band color.

### Benefits

Formatting grouping bands in ScheduleReader allows categorizing the activities into clear sections, enabling quicker schedule reviews and more focused management.

Group

Group By	Indent	To Level	Group Interval	Font & Color
WBS level 1	<input checked="" type="checkbox"/>	20		12 Calibri
WBS level 2				11 Calibri
WBS level 3				11 Calibri
WBS level 4				10 Calibri
WBS level 5				10 Calibri
WBS level 6				9 Calibri
WBS level 7				9 Calibri
WBS level 8				8 Calibri
WBS level 9				8 Calibri
WBS level 10				8 Calibri
WBS level 11				8 Calibri
WBS level 12				8 Calibri
WBS level 13				8 Calibri
WBS level 14				8 Calibri
WBS level 15				8 Calibri
WBS level 16				8 Calibri
WBS level 17				8 Calibri
WBS level 18				8 Calibri
WBS level 19				8 Calibri
WBS level 20				8 Calibri

☐ Hide if empty

☐ Title  
☐ ID / Code  
☐ Name / Description

OK

Cancel

Delete



# Timescale formatting

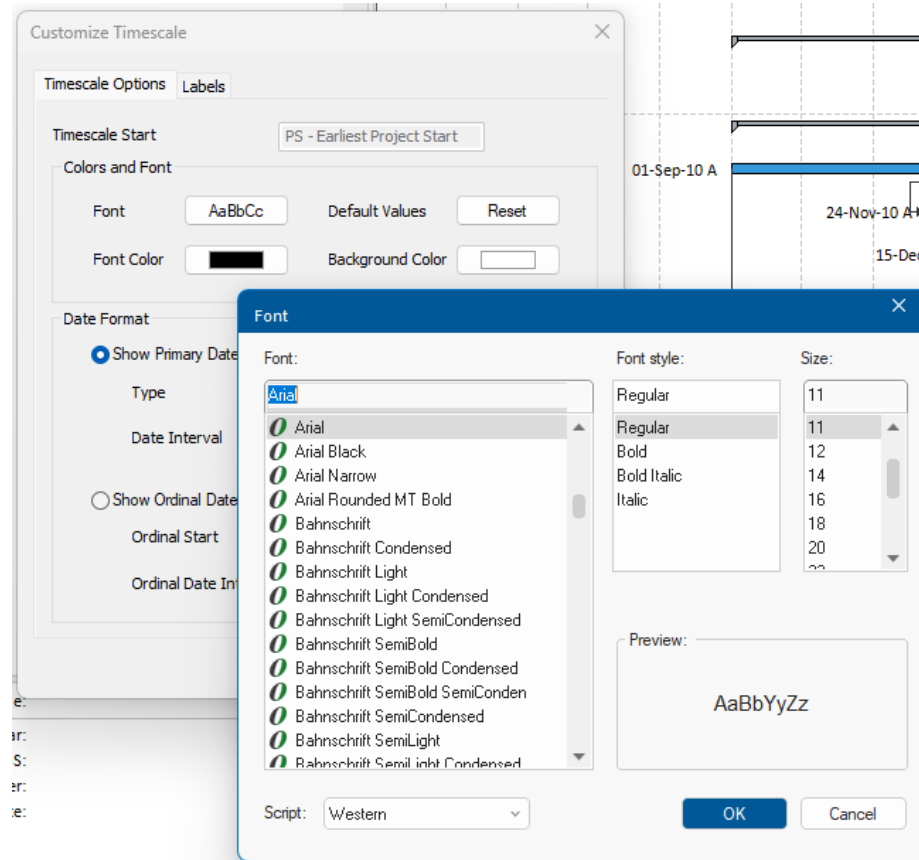
Format Gantt timescale and table header

## Format timescale

Customizing the look of the Gantt timescale and table's header by applying custom background color and custom text properties.

### Benefits

Applying custom background colors and text formatting to the Gantt Chart timescale and table header in ScheduleReader improves visual clarity and incorporate company's standards.





# “Title” and “Name/Description” in Grouping

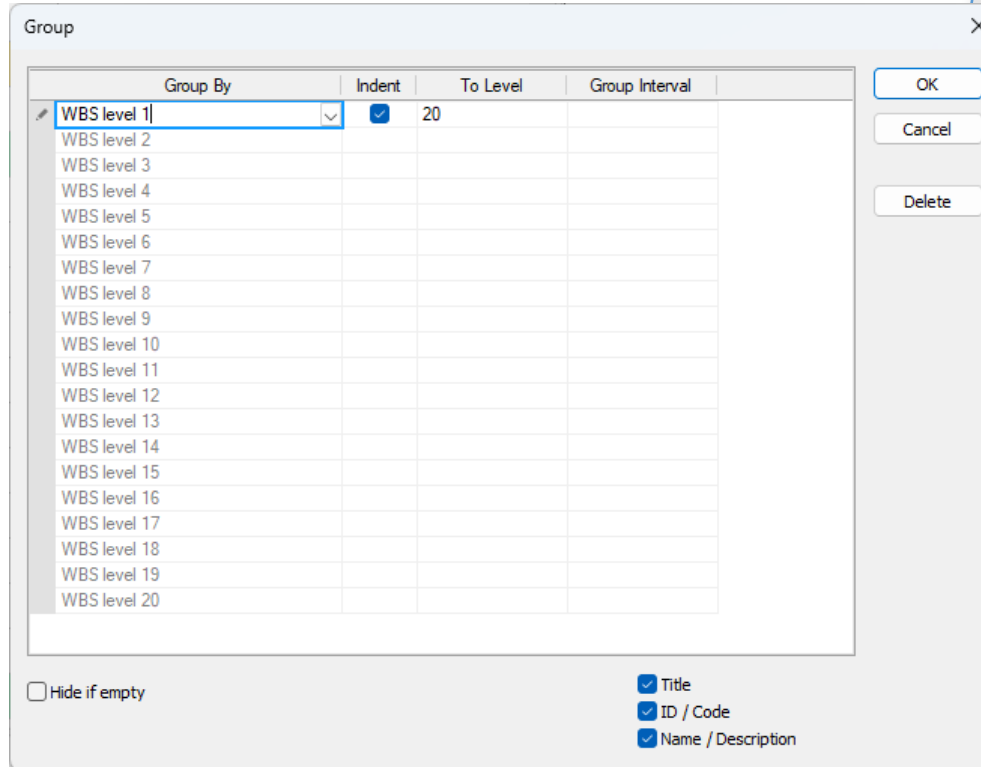
Determine the text that displays on the grouping band.

## New band naming options

Include the field name on the grouping band and/or the field's name/description.

### Benefits

Inserting field names and descriptions into grouping bands in ScheduleReader delivers clear, context-specific labels that reduce confusion and accelerate data-driven decisions..



Group By	Indent	To Level	Group Interval
WBS level 1	<input checked="" type="checkbox"/>	20	
WBS level 2			
WBS level 3			
WBS level 4			
WBS level 5			
WBS level 6			
WBS level 7			
WBS level 8			
WBS level 9			
WBS level 10			
WBS level 11			
WBS level 12			
WBS level 13			
WBS level 14			
WBS level 15			
WBS level 16			
WBS level 17			
WBS level 18			
WBS level 19			
WBS level 20			

☐ Hide if empty

☒ Title  
☒ ID / Code  
☒ Name / Description

OK  
Cancel  
Delete



# Different label positions

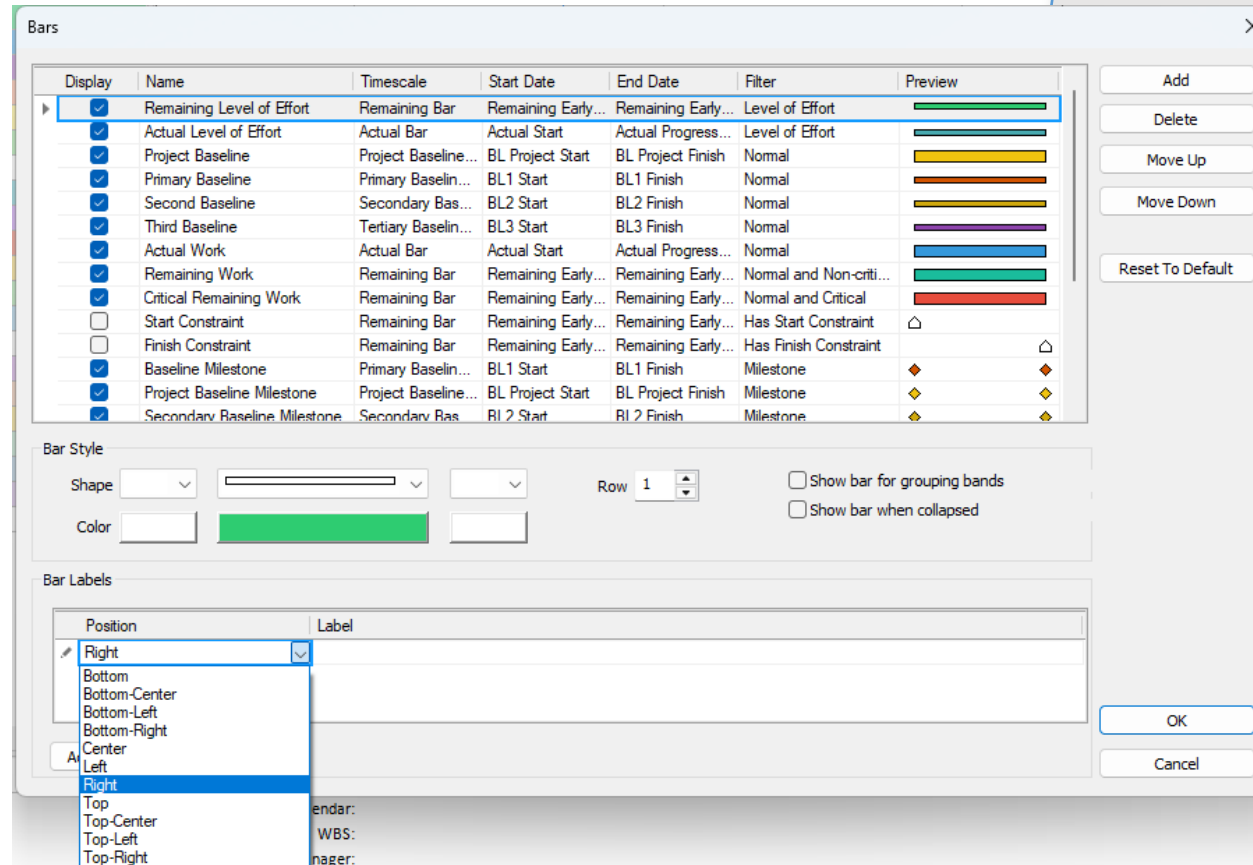
Customize the bar label positions

## Label positions

Customize the look of the Gantt Chart layout by choosing different positions for the bar's labels.

## Benefits

Choosing different positions for bar labels in the Gantt Chart view in ScheduleReader improves readability, information availability and helps avoid overlap with other chart elements.





# Present the project on “Data” and “Current” date

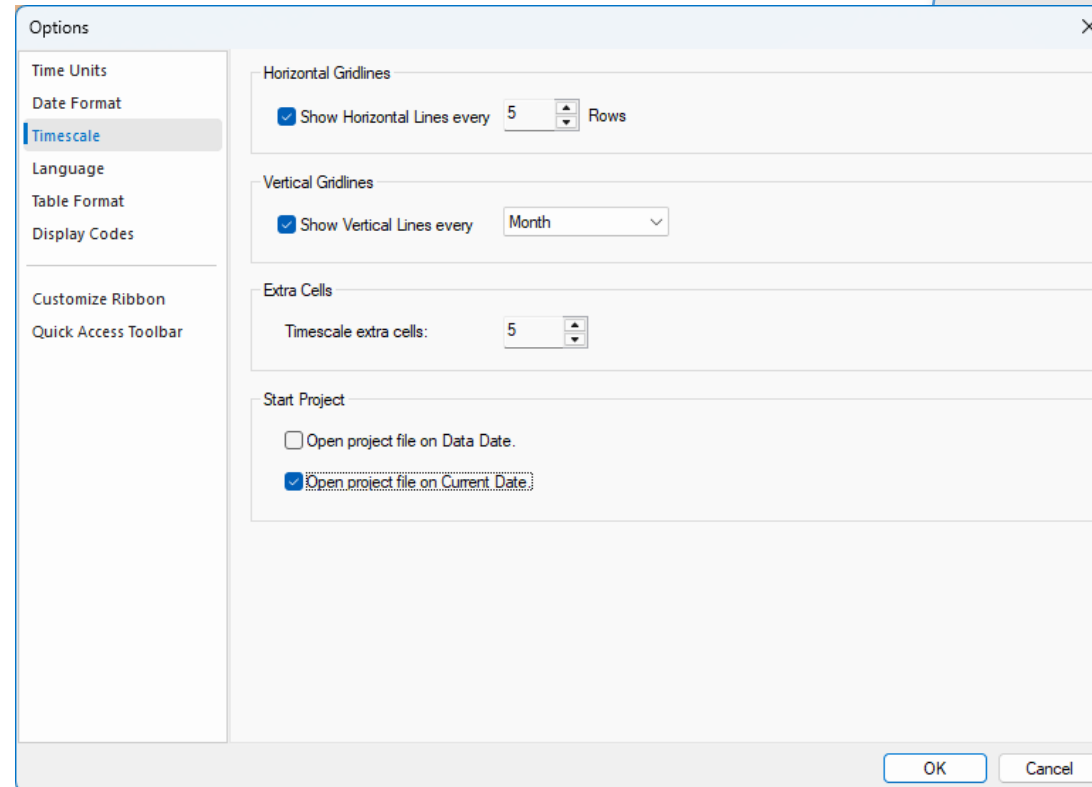
Choose how the project plan will be presented

## “Data” or “Current” date

Choose how the project plan will be presented in the Gantt Chart, from the data date or from current date.

### Benefits

Presenting the project plan from the "Data" date or "Current" date in the Gantt Chart view within ScheduleReader provides a focused timeline that supports accurate tracking and timely decision-making.





# “Date” filters in “Custom” filters

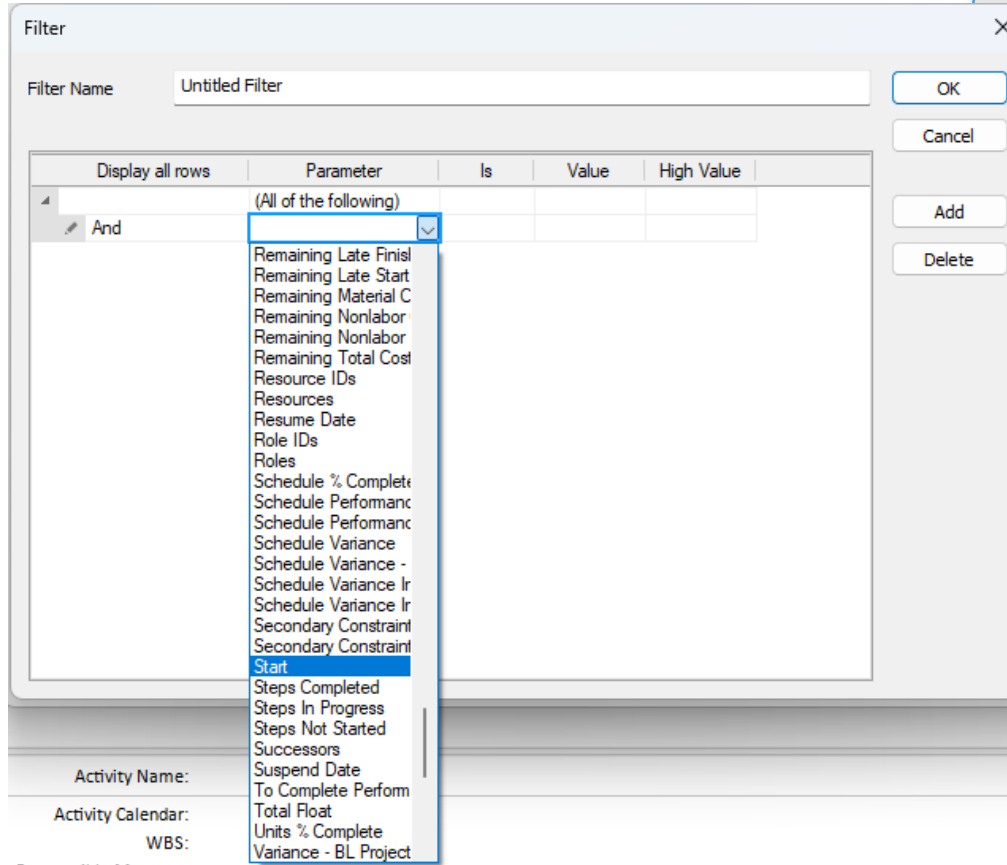
Create custom filters using “Date” fields

## “Date” fields

Use different fields from the “Date” category of fields, for creating custom filters, necessary for your work.

### Benefits

Introducing the “Date” field category in the “Custom Filter” dialog within ScheduleReader allows users to build targeted filters based on project timelines, supporting more precise data analysis and reporting..



Filter

Filter Name: Untitled Filter

OK Cancel Add Delete

Display all rows	Parameter	Is	Value	High Value
	(All of the following)			
And				

Remaining Late Finish  
Remaining Late Start  
Remaining Material C  
Remaining Nonlabor  
Remaining Nonlabor  
Remaining Total Cost  
Resource IDs  
Resources  
Resume Date  
Role IDs  
Roles  
Schedule % Complete  
Schedule Performance  
Schedule Performance  
Schedule Variance  
Schedule Variance -  
Schedule Variance In  
Schedule Variance In  
Secondary Constraint  
Secondary Constraint  
Start  
Steps Completed  
Steps In Progress  
Steps Not Started  
Successors  
Suspend Date  
To Complete Perform  
Total Float  
Units % Complete  
Variance - BL Project

Activity Name:  
Activity Calendar:  
WBS:



# Thank You



[Download Free Trial](#) (Windows)

For more details, please contact us  
at [sales@proadvise.com](mailto:sales@proadvise.com)



ScheduleReader™ is compatible with and can be used with Oracle® Primavera® P6® . It is an independently developed reader product by Synami® and it is not a product of Oracle® , nor is it endorsed, sponsored or affiliated with or by Oracle® . Oracle® , Primavera® and P6® are registered trademarks and brands of Oracle® Corporation and/or its affiliates.

## Your Feedback

Where do you see the  
biggest benefit in your  
case?



*„It's not because things are difficult that we do not dare. It's because we do not dare that they are difficult.“*

Seneca



Andreas Kories



[sales@proadvise.com](mailto:sales@proadvise.com)



+49 7195 98298-0

proadvise GmbH | Brühlweg 4 | 73663 Berglen  
Tel. +49 7195 98298-0 | Fax +49 7195 98298-99 | [www.proadvise.com](http://www.proadvise.com)